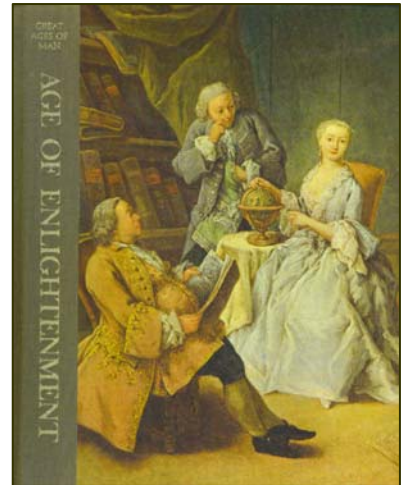


#390 The Deadly Wound of the Beast, Phase II – Accepting the philosophies of the Enlightenment as the “Light of the World” is what has deceived the whole world

There are not too many subject matters in any of the Unsealings that are more important than the topic of this Unsealing. It is about the fact *that* the whole world has been spiritually led astray and explains primarily *how* the whole world has been led astray. *That* the whole world has been led astray is clear from Revelation 12:9.

Revelation 12:9 (KJV) And the great dragon was cast out, that old serpent, called the Devil, and Satan, WHICH DECEIVETH THE WHOLE WORLD: he was cast out into the earth, and his angels were cast out with him.



Key Understanding: *The enlightenment as ‘the light of the world.’ How the whole world has been led astray is through the world accepting the philosophy of men as the truth of God, and specifically by the*



Liberty Enlightening the World

world during the last 350 years accepting the Enlightenment philosophy of men as the Light of the World. As was discussed in Unsealing [#321](#), the Church is *spiritually* blind because of the Enlightenment *natural birth* doctrine of ‘God-given *natural birthrights*.’

The Statue of Liberty and the United States of America are counterfeit ‘Lights of the World’ that have their roots in the Enlightenment, not in the true Light of the World. The Enlightenment represents Satan’s light, not God’s light. The Lord ordained that the Enlightenment be called exactly that – Enlightenment – precisely because it represented a vast *counterfeit* of the true Light of the World gospel.

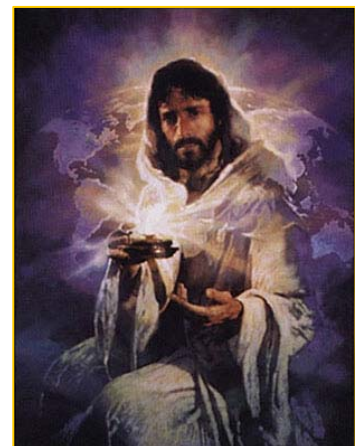
Colossians 2:8 (KJV) Beware lest any man spoil you THROUGH PHILOSOPHY and vain deceit, after the tradition of men, after the rudiments of the world, and not after Christ.

John 9:5-7 (KJV) As long as I am in the world, I AM THE LIGHT OF THE WORLD.

6 When he had thus spoken, he spat on the ground, and made clay of the spittle, and HE ANOINTED THE EYES OF THE BLIND MAN WITH THE CLAY,

7 And said unto him, Go, wash in the pool of Siloam, (which is by interpretation, Sent.) He went his way therefore, and washed, AND CAME SEEING.

Matthew 5:14 (KJV) YE ARE THE LIGHT OF THE WORLD.



A city that is set on an hill cannot be hid.

<< [Previous](#)

[Main Page and List of Unsealing Summaries](#)

[Next](#) >>