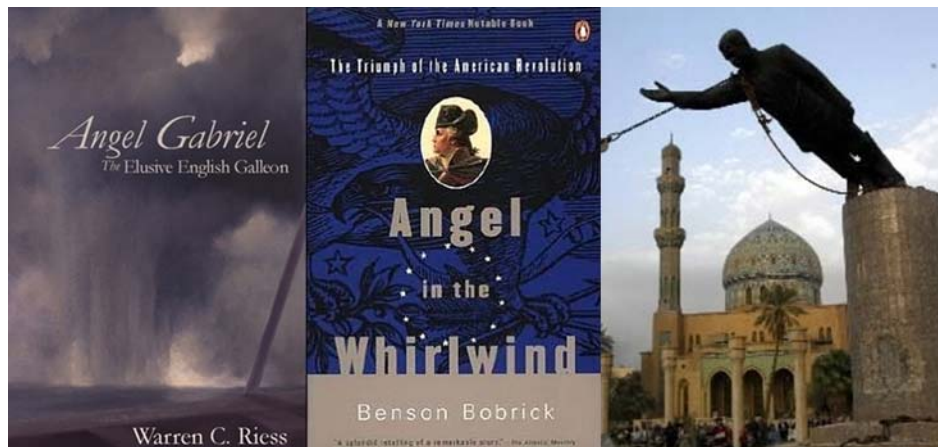


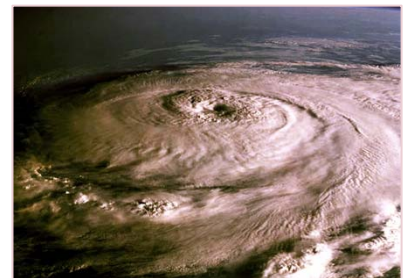
#1862 The Yom Kippur War and the Abomination of Desolation – The post-World War II U.S. waxing great toward the South and toward the East as a *second* Syria/Antiochus IV Epiphanes, part 121, *An Angel riding in the Whirlwind and directing the Storm: Two prophetic routes from the ‘Angel Gabriel’ Great Colonial Hurricane of 1635, which represented the Revolutionary War, to the ‘Angel Gabriel’ 2003 (start of the) Iraq War*

Key Understanding: There were *two prophetic routes* from the ‘Angel Gabriel’ Great Colonial Hurricane of 1635, which represented the Revolutionary War, to the ‘Angel Gabriel’ 2003 (start of the) Iraq War. In other words, the *beginning* and *ending* points of each prophetic route are the ‘Angel Gabriel’ Great Colonial Hurricane of 1635 and the ‘Angel Gabriel’ Iraq War, respectively.



The *two prophetic routes* outlined *below* encompass three passages of scripture containing the specific verses of Ecclesiastes 9:11, Nahum 1:3, and Daniel 8:15-16.

Ecclesiastes 9:11 (KJV) I returned, and saw under the sun, that the race is not to the swift, nor the battle to the strong, neither yet bread to the wise, nor yet riches to men of understanding, nor yet favour to men of skill; but time and chance happeneth to them all.



Nahum 1:3 (KJV) The LORD is slow to anger, and great in power, and will not at all acquit the wicked: the LORD hath his way in the whirlwind and in the storm, and the clouds are the dust of his feet.

***Daniel 8:15-16 (KJV) And it came to pass, when I, even I Daniel, had seen the vision, and sought for the meaning, then, behold, there stood before me as THE APPEARANCE OF A MAN. [The appearance of a “man” in Daniel 8:15 is that of the archangel Gabriel who was sent by the Lord to interpret the vision of the ram and the he-goat in Daniel 8.]
16 And I heard a man’s voice between the banks of Ulai, which called, and said, GABRIEL, MAKE THIS MAN TO UNDERSTAND THE VISION.***

1st prophetic route – Key event: *Bush’s words*. George W. Bush’s inauguration speech of 2001, which mentioned “an angel riding in the whirlwind and directing the storm.”

- (i) The ‘**Angel Gabriel’ Great Colonial Hurricane of 1635** prophetically represented . . .
- (ii) the **Revolutionary War** of John Page and Thomas Jefferson, which was and who were referred to by George W. Bush in his 2001 inauguration speech, which pointed to . . .
- (iii) 9-11 and the ensuing war on terrorism, War in Afghanistan, and **Iraq War**.

2nd prophetic route – Key event: *Thatcher’s words*. British Prime Minister Margaret Thatcher’s exhortation to U.S. President George H. W. Bush to be “Churchillian” in his response to Saddam Hussein’s invasion of Kuwait.

- (i) The ‘**Angel Gabriel’ Great Colonial Hurricane of 1635**, which prophetically represented . . .
- (ii) the **Revolutionary War**, was prophetically linked to . . .
- (iii) the **Great New England Hurricane of 1938**, which prophetically represented the pre-**World War II** event of the Czech agreement to cede the Sudetenland to Nazi Germany in an attempt to appease the Fascist state, prompting the eventual rise to power of Winston Churchill due to his stand against appeasement of Hitler.
- (iv) Later, Churchill’s position against the Sudetenland cession to Nazi Germany was in the background of Margaret Thatcher’s exhortation to George H. W. Bush to be “Churchillian” in the U.S. response to Saddam Hussein’s invasion of Kuwait. This led to the **1991 Gulf War**, the second phase of which was the **9-11**-inspired **2003 (start of the) Iraq War**, events which were unknowingly pointed to by George W. Bush in his 2001 inauguration speech through the words “an angel rides in the whirlwind and directs this storm.”

[<< Previous](#)

[Main Page and List of Unsealing Summaries](#)

[Next >>](#)